



TRACKING STEP BY STEP... JHPTS - VISUAL TRACKING AND TRAINING INC.

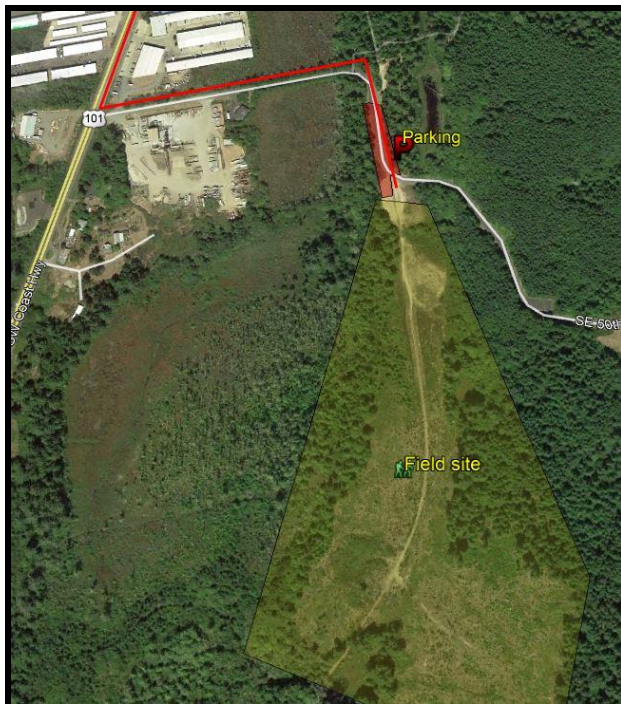
225 Mill Road, Clearwater, Idaho 83552-5116 208-926-4390 joel@jhardin-inc.com www.jhardin-inc.com

20181019A Newport Class Directions:

The classroom is located at the main hospital at 930 SW Abbey St., enter the main entrance, proceed to the rear of the lobby and follow the signs (JHPTS) to the classroom (Education Conference room).



Directions to the Field Training Site:
From the Hospital drive south on Hwy 101. Go over the Yaquina Bay Bridge and continue south for approximately 1.5 miles. At SE 50th St., turn left (east) and follow the roadway as it turns right (south). The entrance to the training area is to your front.



Field Site Parking: Parking is available along SE 50th Street and at the entrance of the training area, to the right.